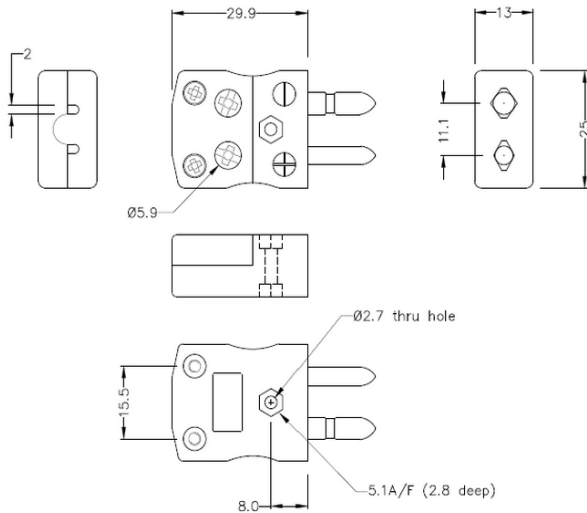
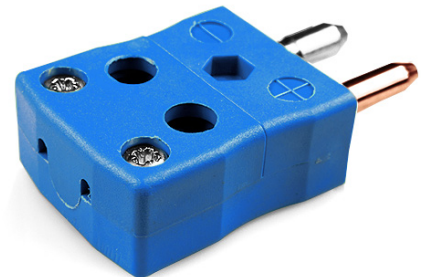


Standard Quick Wire Thermocouple Connector Plug AS-T-MQ Type T ANSI



Standard in-line Plug - Quick Wire
(dimensions in mm)



Labfacility are the UK's leading manufacturer of Temperature Sensors, Thermocouple Connectors and associated Temperature Instrumentation and stockings of Thermocouple Cables. The Company has been trading since 1971 and is ISO9001 accredited.

Standard Quick Wire Thermocouple Connector Plug AS-T-MQ Type T ANSI

Connexion facile 'jab-in' pour la terminaison rapide, il suffit de pousser le fil et serrer la vis. Les contacts sont polarisés pour éviter une connexion incorrecte

Spécifications**Specifications**

Product Code	XE-1531-001
General Description	Easy 'jab-in' connection for rapid termination, contacts are polarised to prevent incorrect connection.
Thermocouple Type	T ANSI
Connector Type	Quick Wire Plug
Connector Size	Standard
Colour	Blue
Max. Temperature	220°C
Pins	Solid Round Pins
+Positive Contact	Copper
-Negative Contact	Copper Nickel
Standards Met	BS EN 50212:1997. RoHS