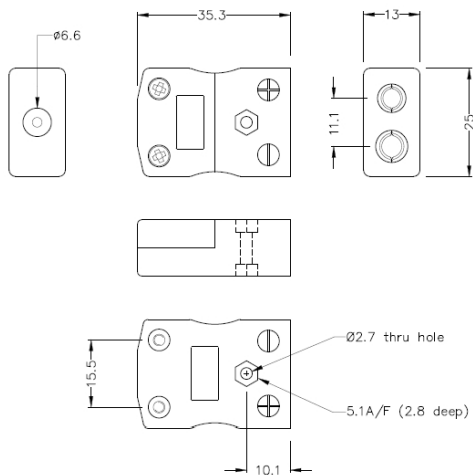


Connecteur thermocouple standard Socket AS-E-F Type E ANSI



Standard in-line Socket
(dimensions in mm)



Labfacility are the UK's leading manufacturer of Temperature Sensors, Thermocouple Connectors and associated Temperature Instrumentation and stockings of Thermocouple Cables. The Company has been trading since 1971 and is ISO9001 accredited.

Connecteur thermocouple standard Socket AS-E-F Type E ANSI

Accepte les broches rondes standard, adaptées aux applications industrielles

Spécifications**Specifications**

Product Code	XE-9112-001
General Description	Accepts standard round plug pins, contacts are polarised to prevent incorrect connection.
Thermocouple Type	E ANSI
Connector Type	Socket
Connector Size	Standard
Colour	Violet
Max. Temperature	220°C
+Positive Contact	Nickel Chromium
-Negative Contact	Copper Nickel
Standards Met	BS EN 50212:1997. RoHS