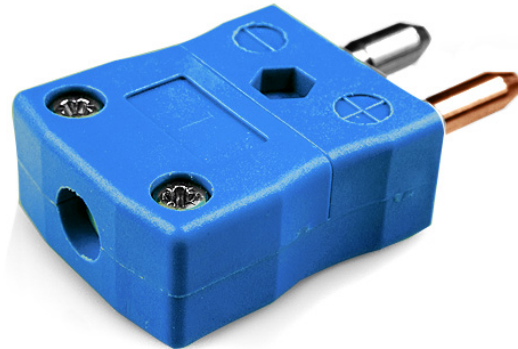
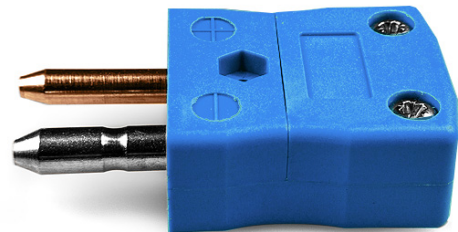


Plug standard thermocouple connecteur AS-T-M Type T ANSI



Standard in-line Plug
(dimensions in mm)



Labfacility are the UK's leading manufacturer of Temperature Sensors, Thermocouple Connectors and associated Temperature Instrumentation and stockings of Thermocouple Cables. The Company has been trading since 1971 and is ISO9001 accredited.

Plug standard thermocouple connecteur AS-T-M Type T ANSI

Les contacts sont faits a partir de véritables alliages Thermocouple. Convient aux applications industrielles

Spécifications**Specifications**

Product Code	XE-1520-001
General Description	Contacts are polarised to prevent incorrect connection
Thermocouple Type	T ANSI
Connector Type	Plug
Connector Size	Standard
Colour	Blue
Max. Temperature	220°C
Pins	Solid Round Pins
+Positive Contact	Copper
-Negative Contact	Copper Nickel
Standards Met	BS EN 50212:1997. RoHS