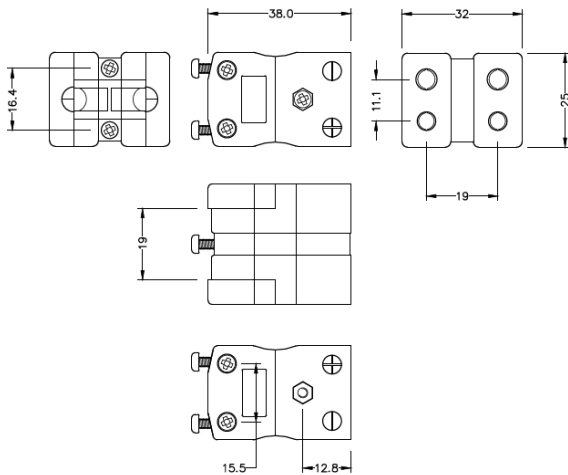
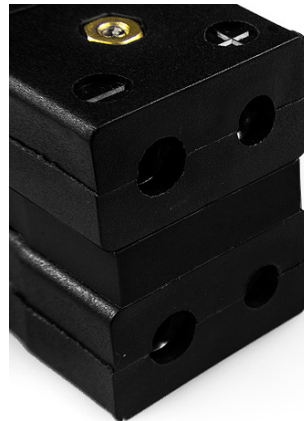


Connecteur thermocouple standard Prise duplex IS-J-FD Type J IEC



Standard Duplex in-line Socket
(dimensions in mm)



Labfacility are the UK's leading manufacturer of Temperature Sensors, Thermocouple Connectors and associated Temperature Instrumentation and stockings of Thermocouple Cables. The Company has been trading since 1971 and is ISO9001 accredited.

Standard Thermocouple Connector Duplex Socket IS-J-FD Type J IEC

Corps en polyester robustes remplis de verre. Les contacts sont polarisés pour éviter une connexion incorrecte

Spécifications

Specifications

Product Code	XE-1477-001
General Description	Rugged glass filled polyester bodies, suitable for industrial applications.
Thermocouple Type	J IEC
Connector Type	Duplex Socket
Connector Size	Standard
Colour	Black
Dimensions	See Schematic Drawing (Product Literature Tab)
Max. Temperature	220°C
+Positive Contact	Iron
-Negative Contact	Copper Nickel
Standards Met	BS EN 50212:1997. RoHS