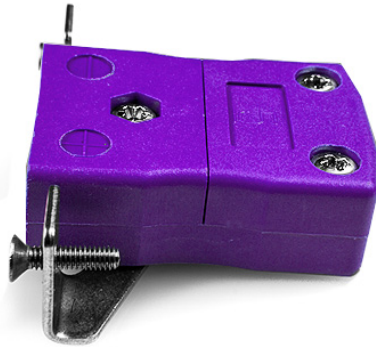


# Standard Panel Mount Thermocouple Connector avec Stainless Steel Bracket IS-E-SSPF Type E IEC



**Standard in-line Socket with stainless steel mounting bracket**  
(dimensions in mm)



Labfacility are the UK's leading manufacturer of Temperature Sensors, Thermocouple Connectors and associated Temperature Instrumentation and stockings of Thermocouple Cables. The Company has been trading since 1971 and is ISO9001 accredited.

**Standard Panel Mount Thermocouple Connector avec Stainless Steel Bracket IS-E-SSPF Type E IEC**

Destiné a etre utilisé dans des procédés plus industriels, mais peut etre utilisé dans toutes les applications souhaitées

**Spécifications****Specifications**

<b>Product Code</b>	XE-1638-001
<b>General Description</b>	Intended for use in more industrial processes but can be used in all applications as desired
<b>Thermocouple Type</b>	E IEC
<b>Connector Type</b>	Socket with SS Bracket
<b>Connector Size</b>	Standard
<b>Colour</b>	Violet
<b>Max. Temperature</b>	220°C
<b>+Positive Contact</b>	Nickel Chromium
<b>-Negative Contact</b>	Copper Nickel
<b>Standards Met</b>	BS EN 50212:1997. RoHS