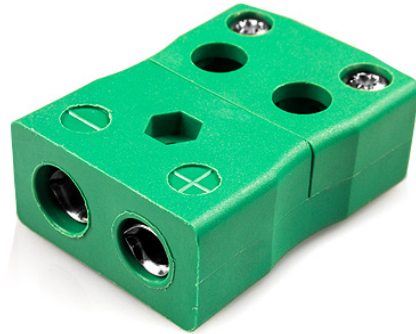
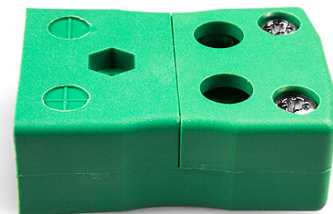


# Prise de connecteur de thermocouple fil rapide standard IS-K-FQ Type K IEC



**Standard in-line Socket - Quick Wire**  
(dimensions in mm)



Labfacility are the UK's leading manufacturer of Temperature Sensors, Thermocouple Connectors and associated Temperature Instrumentation and stockings of Thermocouple Cables. The Company has been trading since 1971 and is ISO9001 accredited.

**Prise de connecteur de thermocouple fil rapide standard IS-K-FQ Type K IEC**

Connexion facile 'jab-in' pour une terminaison rapide, il suffit d'enfoncer le fil et de serrer la vis. Les contacts sont polarisés pour éviter une connexion incorrecte

**Specifications****Specifications**

<b>Product Code</b>	XE-1412-001
<b>General Description</b>	Easy 'jab-in' connection for rapid termination, contacts are polarised to prevent incorrect connection.
<b>Thermocouple Type</b>	K IEC
<b>Connector Type</b>	Quick Wire Socket
<b>Connector Size</b>	Standard
<b>Colour</b>	Green
<b>Max. Temperature</b>	220°C
<b>+Positive Contact</b>	Nickel Chromium
<b>-Negative Contact</b>	Nickel Alloy
<b>Standards Met</b>	BS EN 50212:1997. RoHS