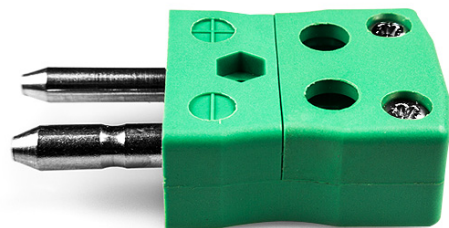
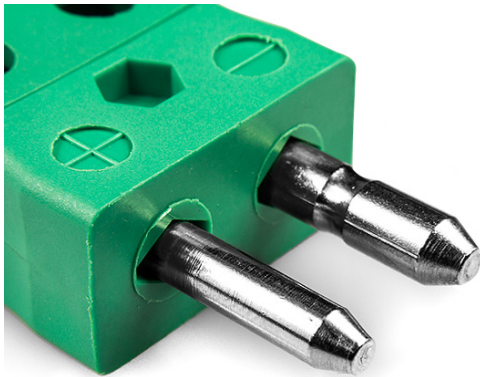
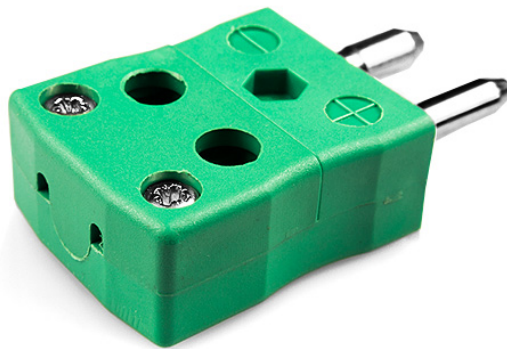


Standard Quick Wire Thermocouple Connector IS-K-MQ Type K IEC



Labfacility are the UK's leading manufacturer of Temperature Sensors, Thermocouple Connectors and associated Temperature Instrumentation and stockings of Thermocouple Cables. The Company has been trading since 1971 and is ISO9001 accredited.

Standard Quick Wire Thermocouple Connecteur IS-K-MQ Type K IEC

Connexion facile 'jab-in' pour une terminaison rapide, il suffit d'enfoncer le fil et de serrer la vis. Les contacts sont polarisés pour éviter une connexion incorrecte

Specifications**Specifications**

Product Code	XE-1411-001
General Description	Easy 'jab-in' connection for rapid termination, contacts are polarised to prevent incorrect connection.
Thermocouple Type	K IEC
Connector Type	Quick Wire Plug
Connector Size	Standard
Colour	Green
Max. Temperature	220°C
Pins	Solid Round Pins
+Positive Contact	Nickel Chromium
-Negative Contact	Nickel Alloy
Standards Met	BS EN 50212:1997. RoHS