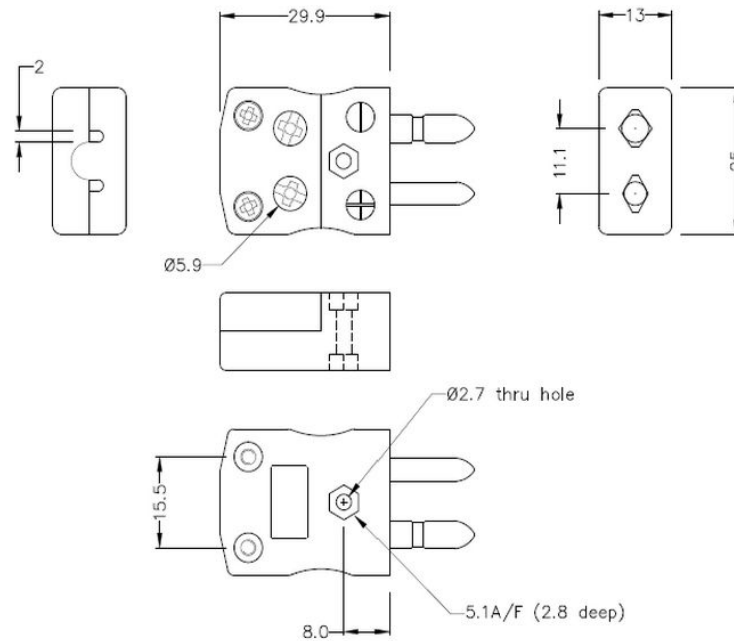
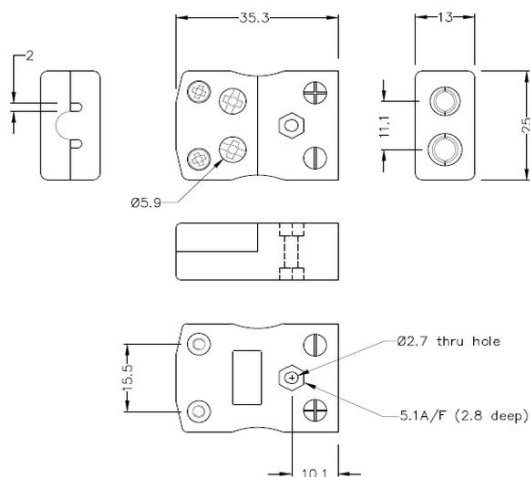


# Standard Quick Wire Thermocouple Connector Quick Wire Plug - Socket JS-CU-MQ-FQ Type CU JIS



**Standard in-line Plug - Quick Wire**  
(dimensions in mm)



**Standard in-line Socket - Quick Wire**  
(dimensions in mm)



Labfacility are the UK's leading manufacturer of Temperature Sensors, Thermocouple Connectors and associated Temperature Instrumentation and stockings of Thermocouple Cables. The Company has been trading since 1971 and is ISO9001 accredited.

**Plug standard de fil rapide de connecteur de thermocouple - Socket JS-CU-MQ-FQ Type CU JIS**

Connecteur de fil rapide standard avec des broches rondes solides. Connexion jab-in facile pour la résiliation rapide.  
Il suffit de pousser le fil et serrer la vis.

**Spécifications****Specifications**

<b>Product Code</b>	XE-1087-001
<b>General Description</b>	Easy 'jab-in' connection for rapid termination, contacts are polarised to prevent incorrect connection
<b>Thermocouple Type</b>	CU JIS
<b>Connector Size</b>	Standard
<b>Connector Type</b>	Quick Wire Plug & Socket
<b>Colour</b>	White
<b>Max. Temperature</b>	220°C
<b>Pins</b>	Solid Round Pins
<b>+Positive Contact</b>	Copper
<b>-Negative Contact</b>	Copper
<b>Standards Met</b>	BS EN 50212:1997. RoHS