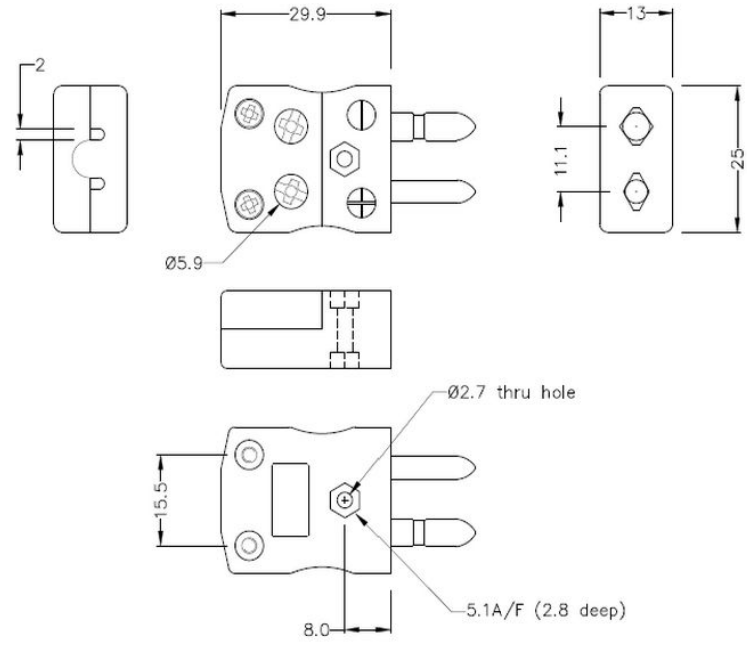
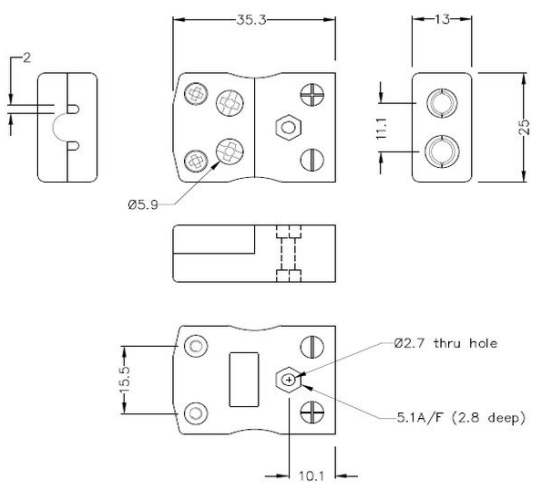


Plug de connecteur de thermocouple de fil rapide standard - Socket AS-CU-MQ-FQ Type CU ANSI



Standard in-line Plug - Quick Wire
(dimensions in mm)



Standard in-line Socket - Quick Wire
(dimensions in mm)



Labfacility are the UK's leading manufacturer of Temperature Sensors, Thermocouple Connectors and associated Temperature Instrumentation and stockings of Thermocouple Cables. The Company has been trading since 1971 and is ISO9001 accredited.

Plug standard de fil rapide de connecteur de thermocouple - Socket AS-CU-MQ-FQ Type CU ANSI

Connecteur standard avec des broches rondes solides. Connexion jab-in facile pour la résiliation rapide. Il suffit de pousser le fil et serrer la vis.

Spécifications**Specifications**

Product Code	XE-1073-001
General Description	Easy 'jab-in' connection for rapid termination, contacts are polarised to prevent incorrect connection
Thermocouple Type	CU ANSI
Connector Size	Standard
Connector Type	Quick Wire Plug & Socket
Colour	White
Max. Temperature	220°C
Pins	Solid Round Pins
+Positive Contact	Copper
-Negative Contact	Copper
Standards Met	BS EN 50212:1997. RoHS