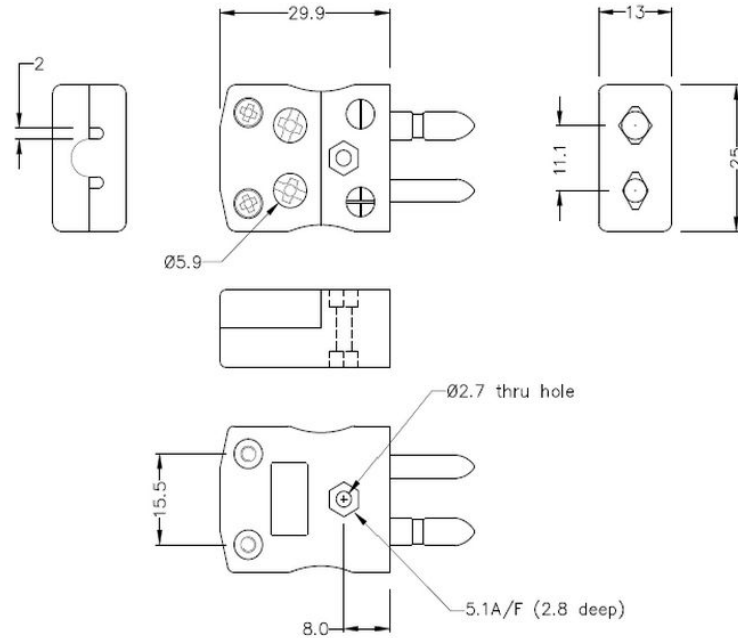
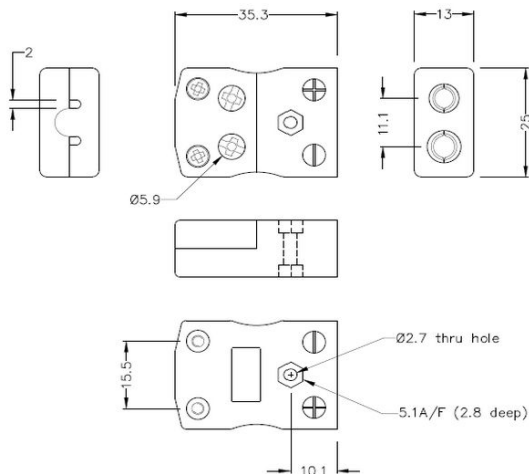


# Plug de connecteur thermocouple de fil rapide standard - Socket IS-R/S-MQ-FQ Type R/S IEC



**Standard in-line Plug - Quick Wire**  
(dimensions in mm)



**Standard in-line Socket - Quick Wire**  
(dimensions in mm)



Labfacility are the UK's leading manufacturer of Temperature Sensors, Thermocouple Connectors and associated Temperature Instrumentation and stockings of Thermocouple Cables. The Company has been trading since 1971 and is ISO9001 accredited.

**Plug de connecteur thermocouple de fil rapide standard - Socket IS-R/S-MQ-FQ Type R/S IEC**

Connexion facile 'jab-in' pour la terminaison rapide, il suffit de pousser le fil et serrer la vis. Les contacts sont polarisés pour éviter une connexion incorrecte

**Spécifications****Specifications**

<b>Product Code</b>	XE-1053-001
<b>General Description</b>	Easy 'jab-in' connection for rapid termination, contacts are polarised to prevent incorrect connection
<b>Thermocouple Type</b>	R/S IEC
<b>Connector Size</b>	Standard
<b>Connector Type</b>	Quick Wire Plug & Socket
<b>Colour</b>	Orange
<b>Max. Temperature</b>	220°C
<b>Pins</b>	Solid Round Pins
<b>+Positive Contact</b>	Copper
<b>-Negative Contact</b>	Copper Alloy
<b>Standards Met</b>	BS EN 50212:1997. RoHS