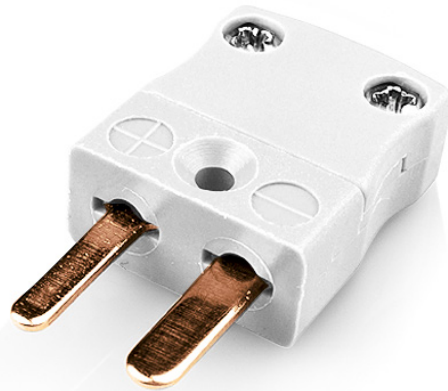


Prise de connecteur de thermocouple miniature FMTC-CU-M Type Cu



Miniature in-line Plug
(dimensions in mm)



Labfacility are the UK's leading manufacturer of Temperature Sensors, Thermocouple Connectors and associated Temperature Instrumentation and stockings of Thermocouple Cables. The Company has been trading since 1971 and is ISO9001 accredited.

Prise de connecteur de thermocouple miniature FMTC-CU-M Type CU

Avec des broches plates adaptes au type de thermocouple et idales pour une utilisation gnrale, tous les contacts sont polariss pour assurer une connexion correcte. Ces connecteurs acceptent des cbles thermocouples jusqu 4mm de diamtre.

Spcifications**Specifications**

Product Code	XE-1370-001
General Description	Ideal for general purpose use. Contacts are polarised to ensure correct connection.
Thermocouple Type	IEC, ANSI, JIS Type CU
Connector Type	Plug
Connector Size	Miniature
Colour	White
Dimensions	See Schematic Drawing (Product Literature Tab)
Max. Temperature	220°C
Pins	Flat Pins
+Positive Contact	Copper
-Negative Contact	Copper
Standards Met	BS EN 50212:1997. RoHS